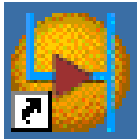


PADS-2007

简介与应用

PADS 2007

- **PADS 2007 软件组成**



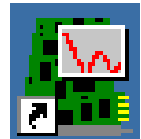
PADS Logic



DxDesigner



PADS Layout



HyperLynx



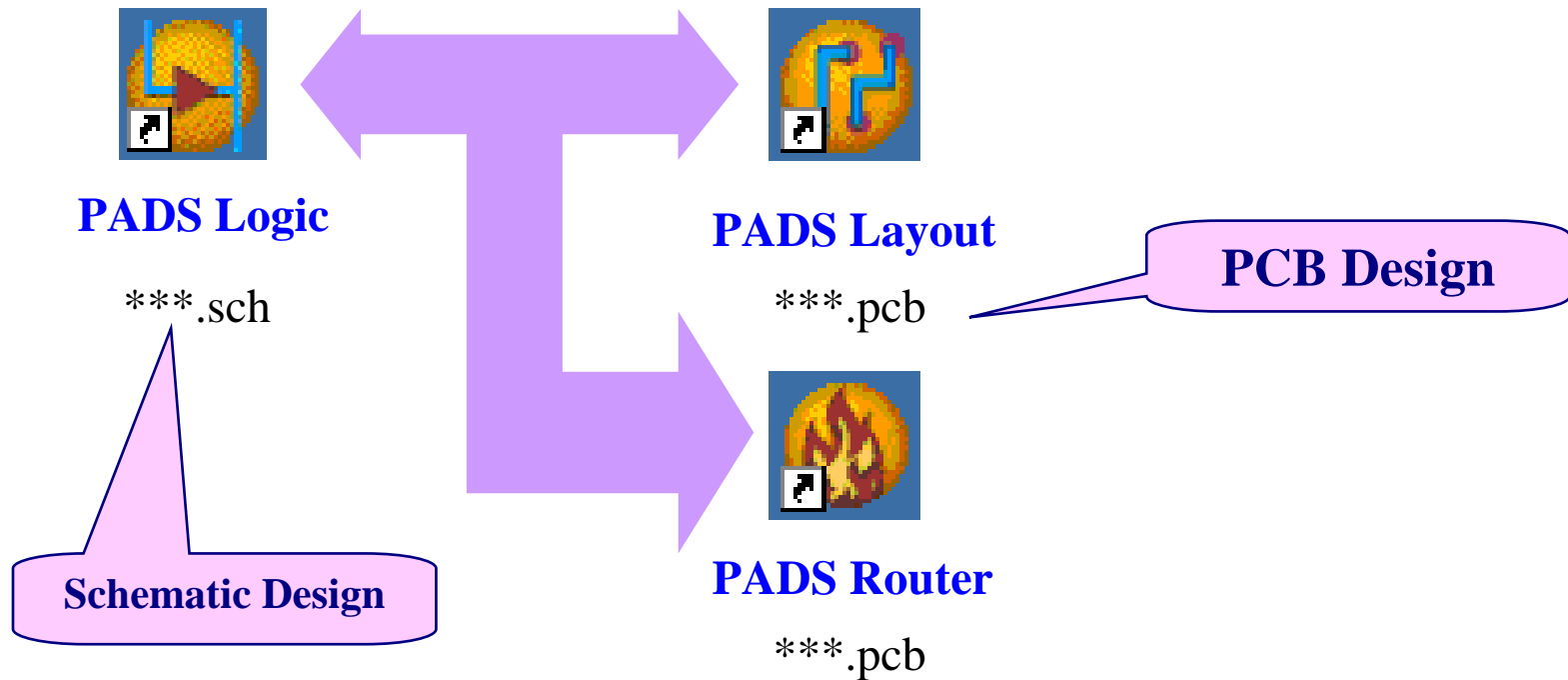
PADS Router



**eProduct Designer
2007PADS**

PADS 2007

- PADS Logic 与 PADS Layout & Router 的关系以及文件数据管理



PADS 2007

- 元件库(Library)结构

软件默认元件库路径:

C:\MentorGraphics\2007PADS\SDD_HOME\Libraries

The image shows the PADS 2007 software interface. On the left is the File menu with 'Library...' circled in red. A purple arrow points to the 'Library Manager - Browsing All Libraries' dialog box. This dialog has a 'Filter' section with icons for Decals, Parts, Lines, and Logic. A blue circle highlights these icons. To the right, a zoomed-in view of the 'Filter' section shows four callout boxes: 'Decals PCB 封装', 'Part Type 元件类型', 'Lines 线', and 'Logic 逻辑封装'. The 'Items' list at the bottom of the dialog is currently empty.

PADS 2007

- 元件库(Library)的关系

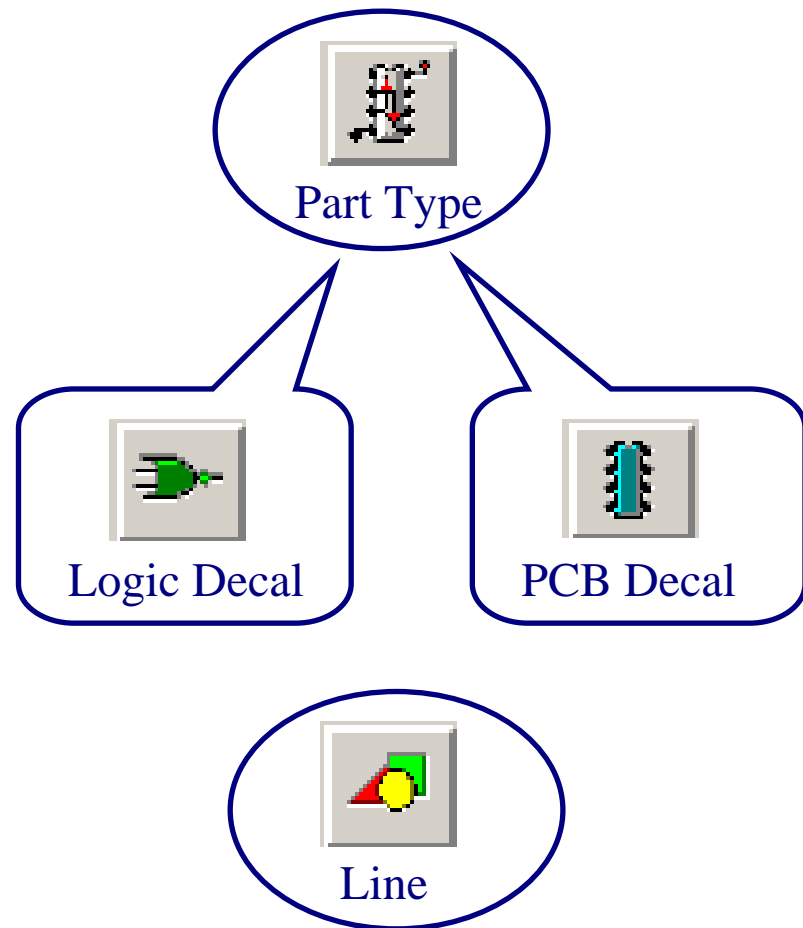
每一个库由四个文件组成

Part Type ----- *.pt07

Logic Decal --- *.ld07

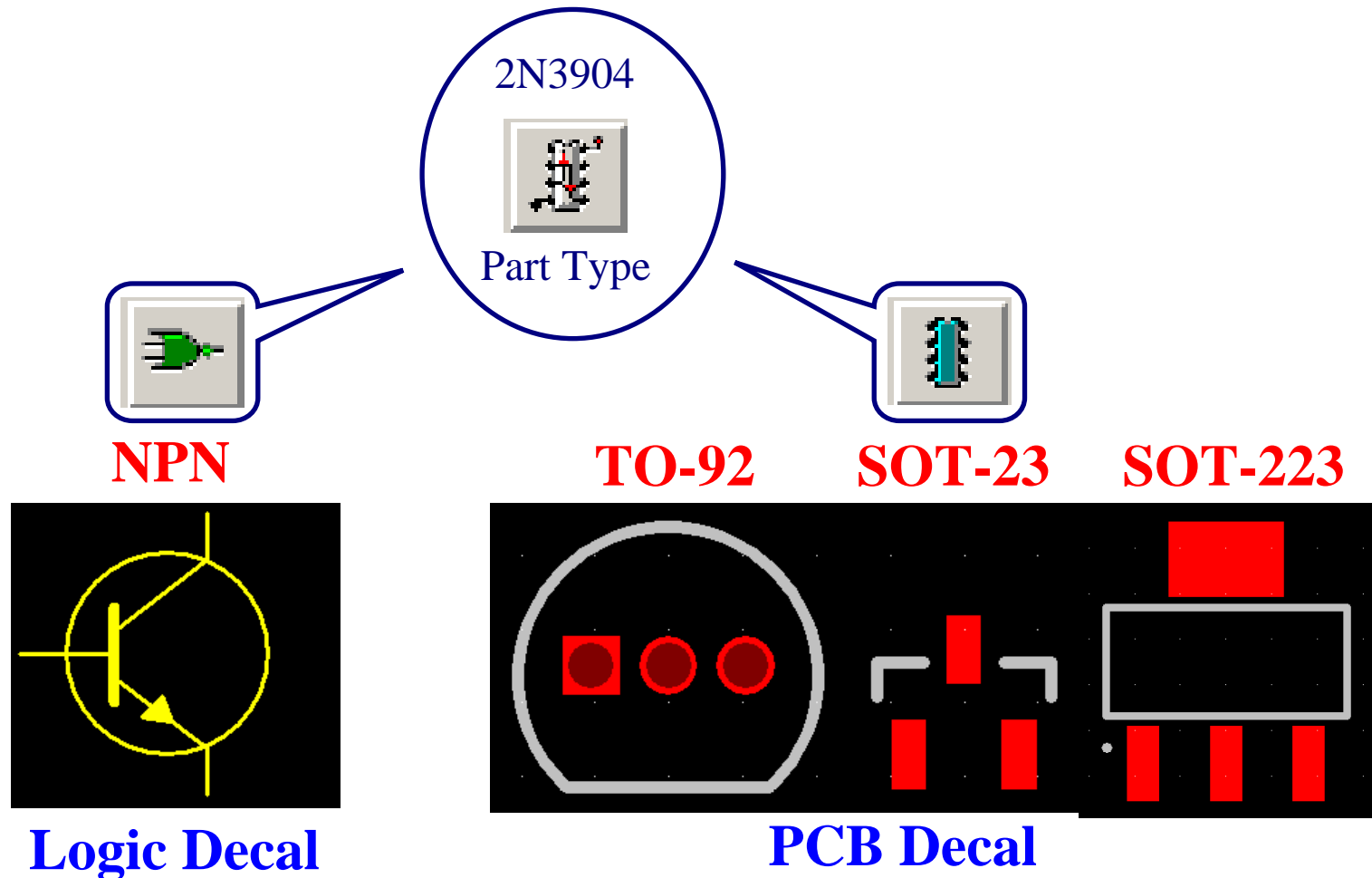
PCB Decal ---- *.pd07

Line ----- *.ln07



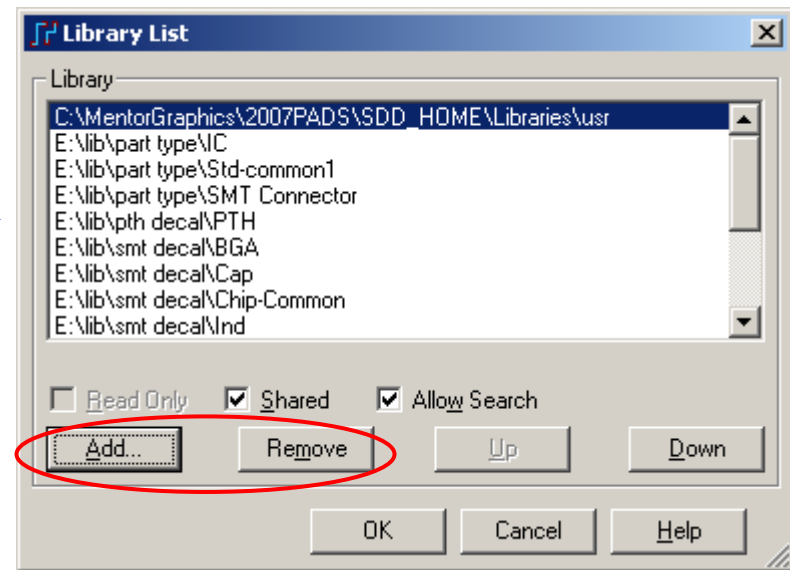
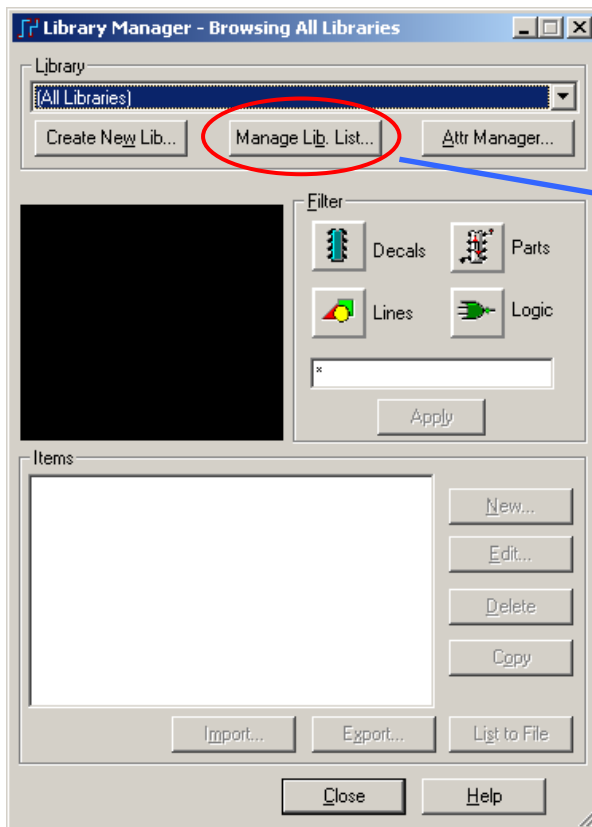
PADS 2007

- 以2N3904为例说明库之间关系



PADS 2007

- 元件库的添加与移除

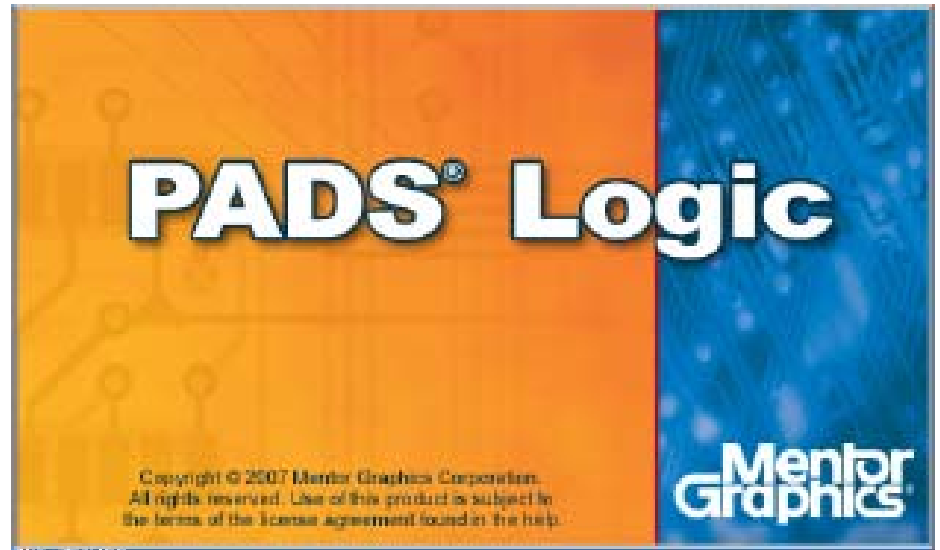


添加库的后缀名为 *.pt07

PADS 2007

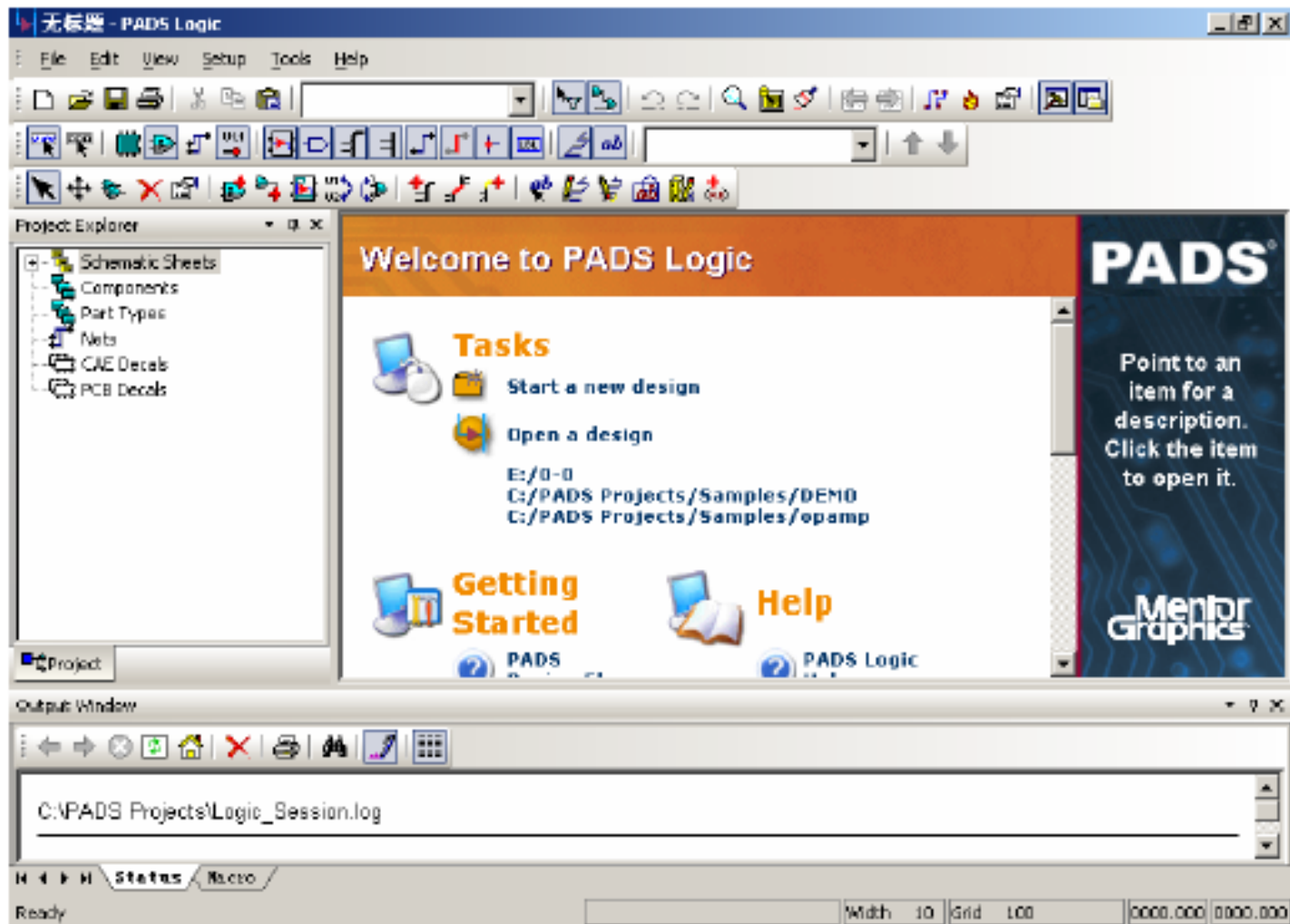
★PADS Logic

- 界面与操作
- 逻辑封装的建立
- 参数与颜色设置
- 建立电气连线与总线
- 元器件的添加与编辑
- 设计规则的初步定义
- 图形与文字的添加
- 报告输出与打印
- 网表导出与同步连接
- 常用命令与热键



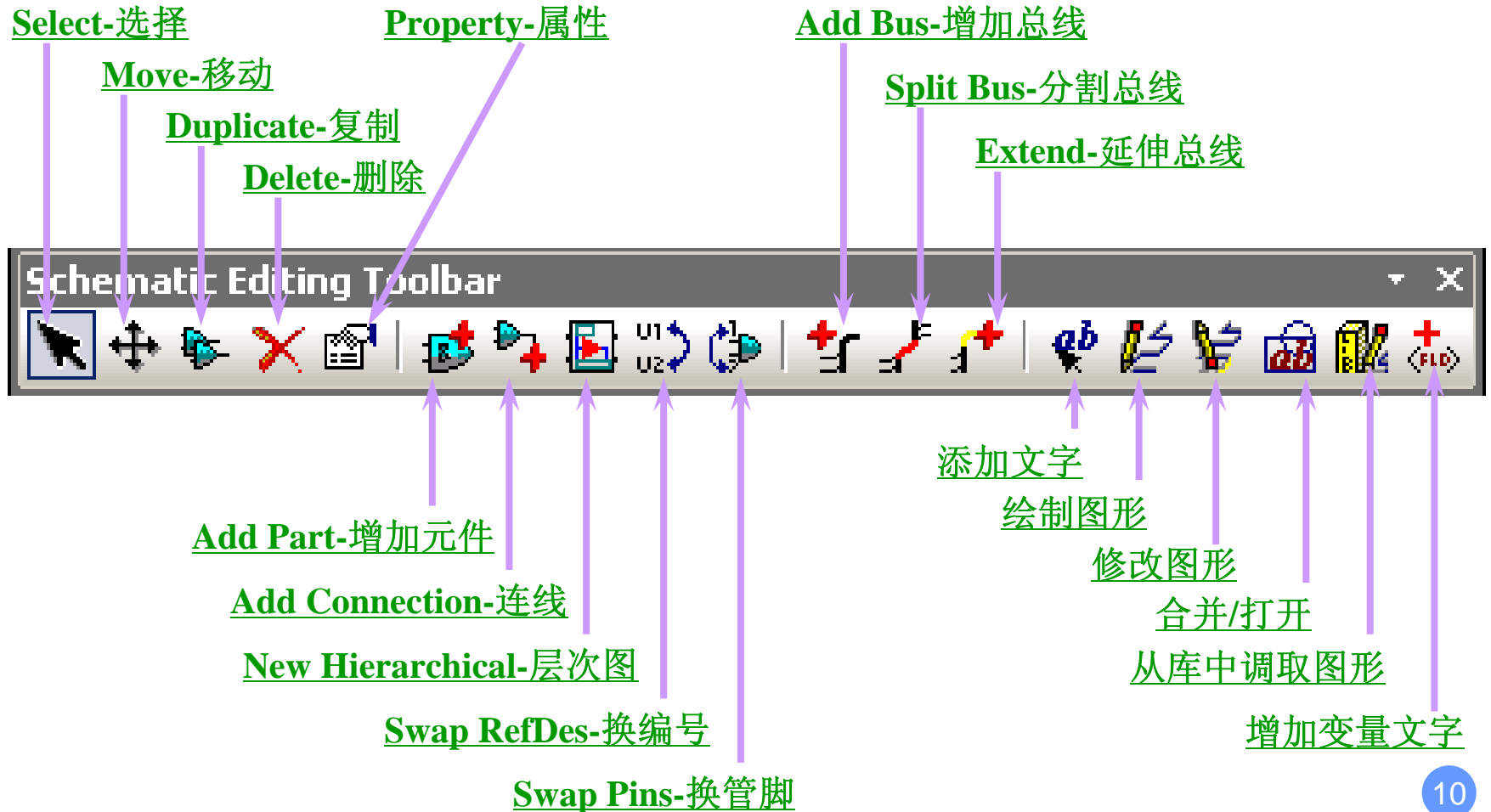
PADS 2007

- 软件界面

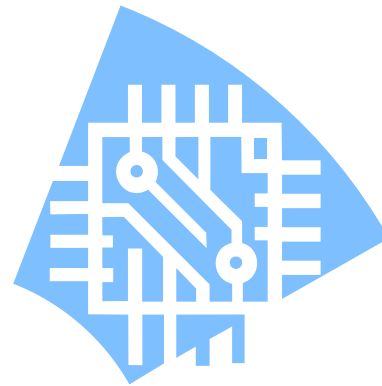


PADS 2007

原理图编辑工具栏



PADS 2007



THANKS

